

# Workshop: Desktop Scanning Electron Microscope

## TEST DRIVE THE LATEST PHENOM SEM

NEW ZEALAND 2015

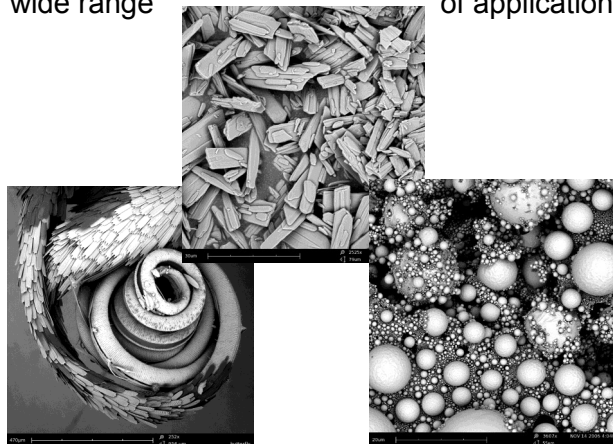
30 JAN	Christchurch	Canterbury University
2-4 FEB	Dunedin	Otago University (MNZ2015)
16-17 FEB	Wellington	Callaghan Innovation
19-20 FEB	Palmerston North	Massey University
24-25 FEB	Hamilton	University of Waikato
27 FEB & 2 MAR	Auckland	University of Auckland



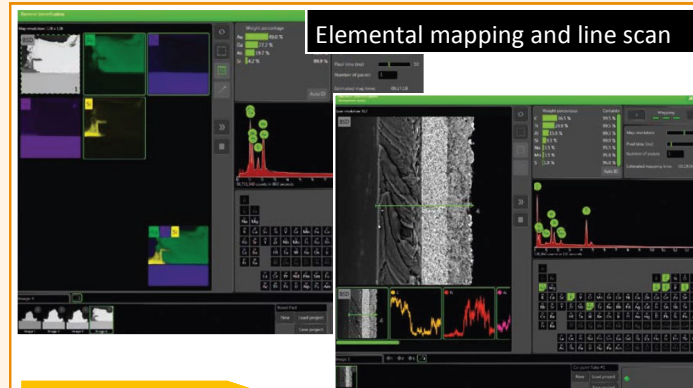
### On Show for test drive:

**Phenom ProX with X-ray analysis (EDS) for chemical Identification**

The Phenom desktop SEM is an **affordable, fast and easy to use tool** suitable for investigating micron and submicron structures in high resolution. With **fully integrated x-ray analysis (EDS)**, fastest time to **imaging (<30sec)** and **"never lost" navigation** the Phenom SEM offers advanced imaging for a wide range of applications.



This workshop will provide you with new insights and enable you experience the Phenom SEM instrument via scheduled demonstrations followed by additional "hands on" time for sample analysis.



#### Demonstration:

The Phenom SEM will be demonstrated at hourly intervals each day. Topics will include sample presentation and data analysis.

#### Hands on:

Following each demonstration the Phenom SEM will be available for participants to operate and for sample analysis.

*Morning sessions start from 9am to 12pm*

*Afternoon sessions start from 2.00pm to 4pm*

#### Registration:

Please register using the online form

[www.atascientific.com.au/eventsandtraining/registration-page/](http://www.atascientific.com.au/eventsandtraining/registration-page/)

**RSVP: 11 February 2015**

For further information, call **02 9541 3500** or

email [enquiries@atascientific.com.au](mailto:enquiries@atascientific.com.au)

[www.atascientific.com.au](http://www.atascientific.com.au)